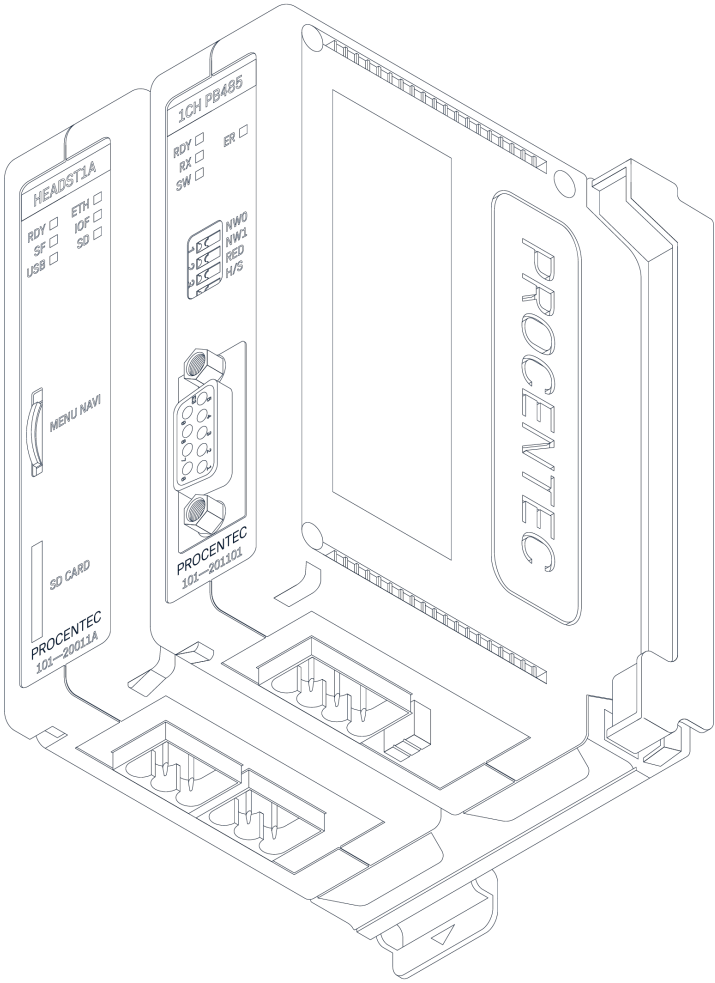


# PROCENTEC®

Member of the HMS group.



## ComBricks

Technical Datasheet Head Station 1A/1B/1C/1Z

## Technical Data - Head Station 1A/1B/1C/1Z

Type differences (Hardware is identical with all types)

Head Station 1A	No ProfiTrace OE
Head Station 1B	ProfiTrace OE for 1 PROFIBUS network + ProfiTrace 2 live streaming + OPC
Head Station 1C	ProfiTrace OE for 4 PROFIBUS networks + ProfiTrace 2 live streaming + OPC
Temporary Head Station License 1Z* *This module will temporarily replace shipments of Head Station 1A and 1B.	ProfiTrace OE for 3 PROFIBUS networks + ProfiTrace 2 live streaming + OPC. License system for 1Z is fixed; no upgrading is possible after purchase.

### Power supply specifications

Nominal supply voltage	10.8 .. 26.4 VDC
Current consumption	800 mA (fully loaded)
Power	20 W
Reverse polarity protection	Yes
Redundant power supply	Yes
Wire diameter	< 2.5 mm <sup>2</sup>
	<p><u>Installation notes:</u> The device shall be supplied from an isolating transformer having a secondary Listed fuse rated either:</p> <ul style="list-style-type: none"> <li>• Maximum 5 amps for voltages 12~20 V, or</li> <li>• Maximum 4 amps for voltages 21~24 V, or is supplied by a Class 2 power supply, or equivalent.</li> </ul>

### Ethernet

Connector	RJ 45
Cable length	Max. 100 m
Link speed	10 / 100 Mbps
MAC address	9C.B2.06.xx.xx.xx (label on the side of the Head Station)
Supported protocols	HTTP, FTP, SMTP, TELNET, DHCP, SNMP. CommDTM is not available on 1Z type.
Default IP address after reset/purchase	<b>192.168.1.254</b>
Connections	20 simultaneous web server clients

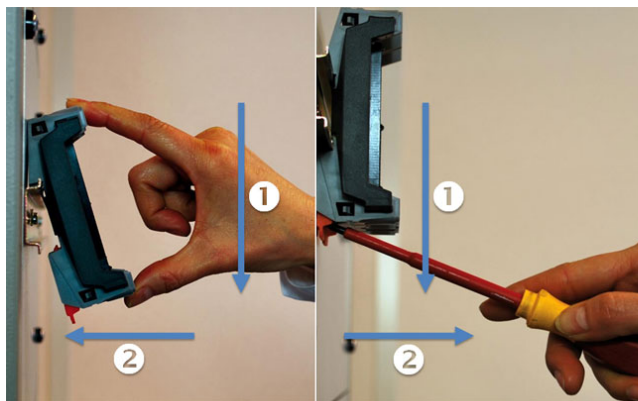
### Relay contact

Resistance	300 mOhm (plug included)
Voltage	24 VAC
Current	0.5 A
	<p><u>Installation notes:</u> The Relay output shall be supplied from an isolating transformer having a secondary Listed fuse rated either:</p> <ul style="list-style-type: none"> <li>• Maximum 5 amps for voltages 12~20 V, or</li> <li>• Maximum 4 amps for voltages 21~24 V, or is supplied by a Class 2 power supply, or equivalent.</li> </ul>

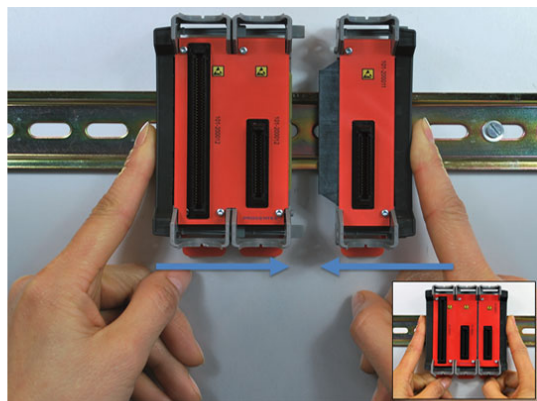
### Backplane

Modules	32 (10 repeater modules positioned in the first 10 slots)
Module limitations	The 1Z Head Station does not support the DP slave module (101-220210) and PN IO module PND-001 (101-220110).

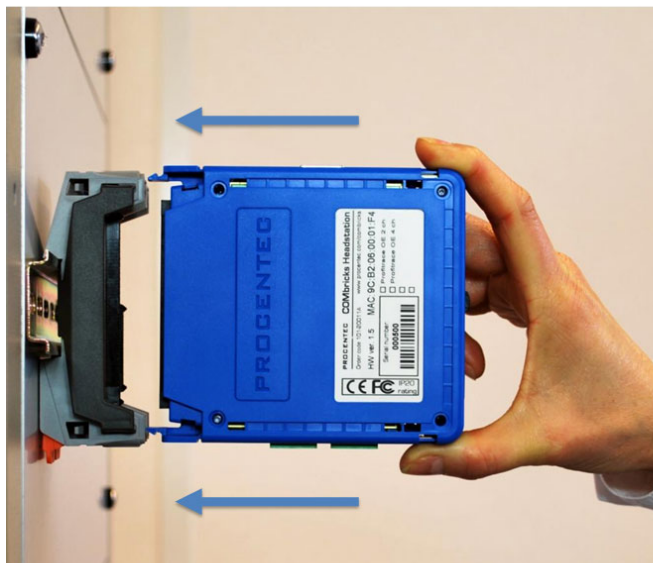
Current available for the backplane PROFIBUS networks Compatible backplane units	2.5 A Up to 4, depending on license 101-200012, 101-200023, 101-200024, 101-200027
SD Card	
Types Size	SD and SDHC Max. 32 GB (1 GB is provided)
Others	
Weight MTBF Ambient operating temperature rating	150 g To be defined 0°C to +60°C



Mounting and un-mounting backplanes



Adding additional backplanes



Inserting modules



Powering the Head Station