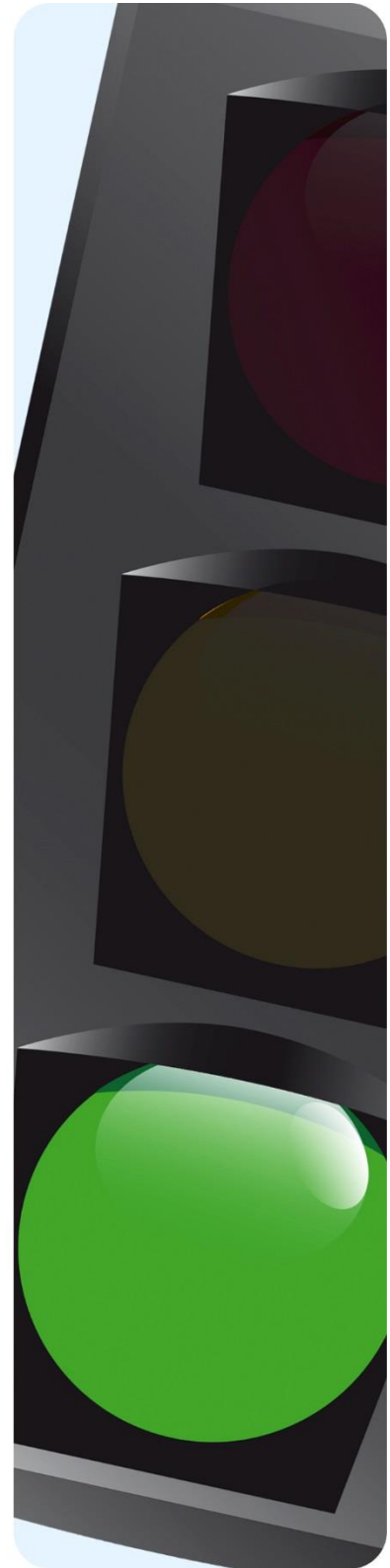
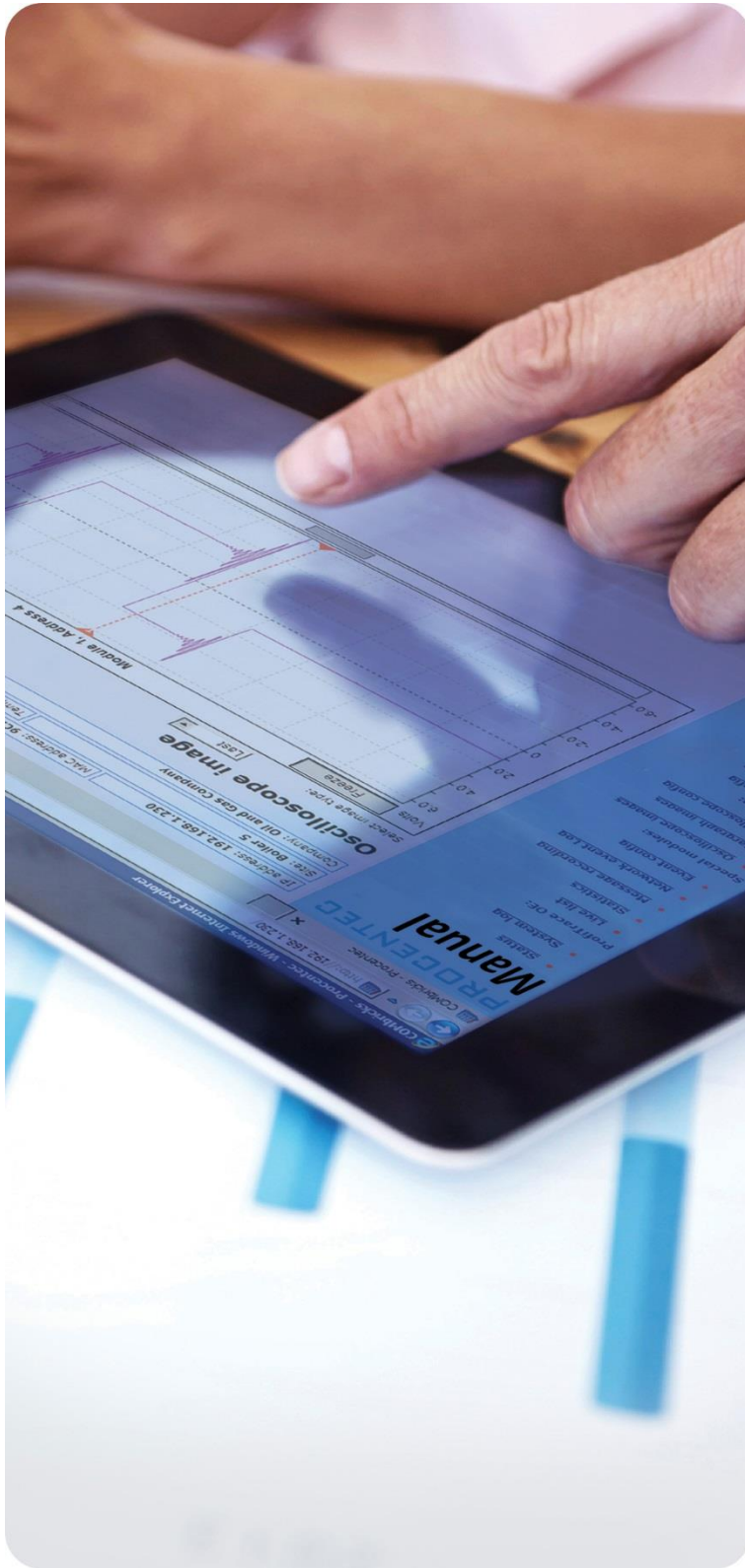


PROCENTEC



Network Condition Indicator

User Manual V1.2.2

Copyright © 2019 PROCENTEC

All rights reserved. No part of this publication may be reproduced, stored in a retrieval system, or transmitted, in any form or by any means, electronic, mechanical, photocopying, recording or otherwise, without the prior written permission of the publisher.

ComBricks is a registered trademark of PROCENTEC. Other products or company names are or may be registered trademarks and are the property of their respective companies.

Safety Guidelines

This manual contains notices which you should observe to ensure your own personal safety, as well as to protect the product and connected equipment. These notices are highlighted in the manual by a warning sign and are marked as follows according to the level of danger:



Draws your attention to important information on handling the product, a particular part of the documentation or the correct functioning of the product.

Disclaimer of Liability

We have checked the contents of this manual as much as possible. Since deviations cannot be precluded entirely, we cannot guarantee full agreement. However, the content in this manual is reviewed regularly and necessary corrections will be included in subsequent editions. Suggestions for improvements are welcome.

Important information

Purpose of the Manual

This user manual provides information how to work with the Network Condition Indicator.

Recycling and Disposal

The parts of the ComBricks can be recycled. For further information about environment-friendly recycling and the procedure for disposing of your old equipment, please contact:

PROCENTEC
Klopperman 16
2292 JD WATERINGEN
The Netherlands

Tel.: +31-(0)174-671800
Fax: +31-(0)174-671801
Email: info@procentec.com

Document Updates

You can obtain constantly updated information on PROCENTEC products on the Internet at www.procentec.com

You can also contact PROCENTEC Customer Support:

- By phone at +31-(0)174-671800
- By fax at +31-(0)174-671801
- By email at support@procentec.com

Contents

Important information	2
1. Product description	4
1.1 Introduction	4
1.2 Product features.....	4
1.3 Detectable faults	5
1.4 System requirements	5
2. Software installation instructions.....	6
2.1 Installation procedure and license	6
2.2 Updates	6
3. Main interface window	7
3.1 List of connected ComBricks	7
3.1.1 Add a ComBricks Head Station	7
3.1.2 Edit a ComBricks Head Station	8
3.1.3 Remove a ComBricks Head Station	8
3.2 The Traffic Light.....	8
3.2.1 Measurement time and Clear button	8
3.2.2 Maintenance mode	9
3.2.3 Remote updating of the Head Station	9
3.2.4 Local updating of the Head Station	11
3.2.5 Updating ComBricks modules	11
3.2.6 Traffic light rules	11
3.2.7 ComBricks Head Station details	11
3.2.8 System tray icon	13
3.2.9 System warnings: Exclamation mark.....	13
3.3 Minimized view	14
3.4 Changing language	14
3.5 Changing rules & behavior	14
4. Revision history	15
5. Sales offices and distributors	16
6. About PROCENTEC	21
7. Notes	22

1. Product description

1.1 Introduction

The Network Condition Indicator for ComBricks is a convenient tool to monitor and manage multiple ComBricks sets simultaneously. It features a traffic light indicator, similar to the traffic light in ProfiTrace, to monitor the status of your PROFIBUS network(s).

It turns red when critical problems occur, or yellow when less critical issues arise. This enables maintenance crew to react directly to a problem. One click on the red ComBricks reveals the problem in simple words.

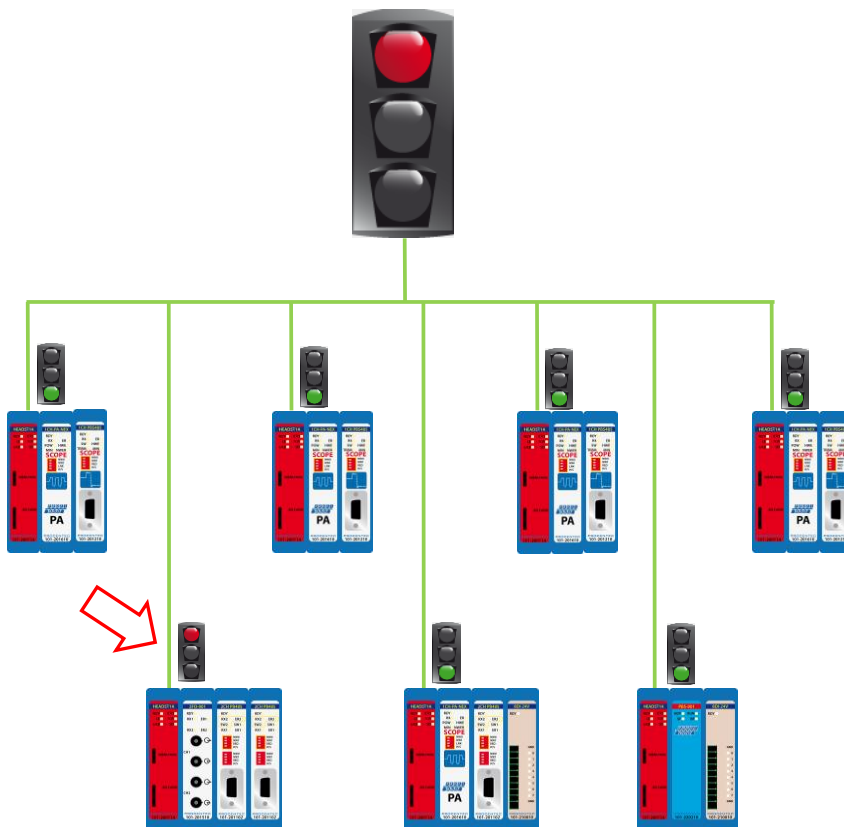


Fig. 1 – Schematic overview. If one ComBricks has a critical problem, the Network Condition Indicator turns red

1.2 Product features

- Real time overview of all ComBricks
- Easy access to individual ComBricks sets
- One interface to set selected ComBricks in maintenance mode
- One interface to reset all measurements of all ComBricks
- One interface to update all ComBricks firmware remotely
- Minimized and stay-on-top mode
- Multi-language support

1.3 Detectable faults

- Lost devices
- Syncs
- Repeats/retries
- Illegal telegrams
- Critical Diagnostics (Ext. Diag)
- Idle voltage problems (Scope module required)
- Amplitude (Bargraph) problems on specific devices (Scope or PA module required)
- PA fault problems: jitter, noise or DC voltage (PA module required)
- System warnings

1.4 System requirements

In order to use the Network Condition Indicator and all sub programs, your computer system should include the hardware and software listed below. The software has been tested to work on Windows 7, Windows 8 and Windows 10.

Minimum requirements:

- Microsoft Windows 7 or higher
- 600 MHz Intel Pentium III processor or equivalent
- 1024 MB of RAM
- 1024x768 resolution display
- 1 free 100Mbit Ethernet port
- 1 mouse or other pointing device

Recommended (differences from minimum):

- 2048MB of RAM
- 1280 x 1024 resolution display or better

2. Software installation instructions

This chapter describes the installation for the Network Condition Indicator. It is assumed that you have a basic knowledge of Windows operating systems. All examples and dialogs are based on a US/UK based Windows installation and may differ slightly based on upgrades, updates and enhancements. Please use the screenshots in conjunction with the description in order to press the appropriate buttons and other user interface items.

2.1 Installation procedure and license

You can run the Network Condition Indicator directly from a local folder or any other location without having to install it on your PC. Just make sure to have the `HID_Wrapper.dll` and `exe` file in the same folder and run the executable.

The older versions (v1.4.1 and lower) needed a license if you were monitoring more than 3 ComBricks. Since version 1.4.2 the license is no longer needed; you can use it without restrictions on as many ComBricks as you want.

2.2 Updates

It is the policy of PROCENTEC to release periodic updates.

To update your Network Condition Indicator version, simply download the new ZIP file from our website and copy the contents of the ZIP file to the current folder. This will overwrite your previous version. If you want to keep the previous version you can make a backup of it in a different folder.

3. Main interface window

The Network Condition Indicator has a main window with menu bar and status bar. It allows easy access to all features of the program. It also displays a traffic light with measurement time and a list of all connected ComBricks, including their status, serial number, firmware version, uptime, IP address and used port.

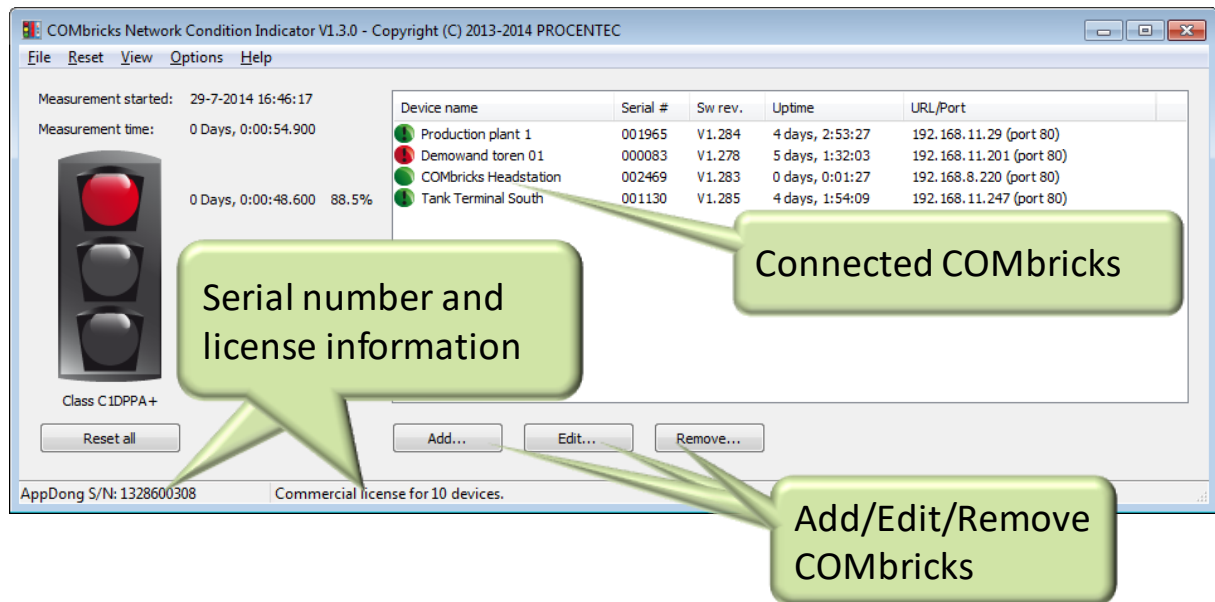


Fig. 2 - Main window

3.1 List of connected ComBricks

3.1.1 Add a ComBricks Head Station

To add a ComBricks set, click 'Add...'. In the following window that pops up, you can add an IP address manually. Enter the port number of the ComBricks (default is 80). If the ComBricks Head Station has a User and/or Admin password, provide it. This is not required to view the traffic light status, but a password is required to be able to reset the measurements.

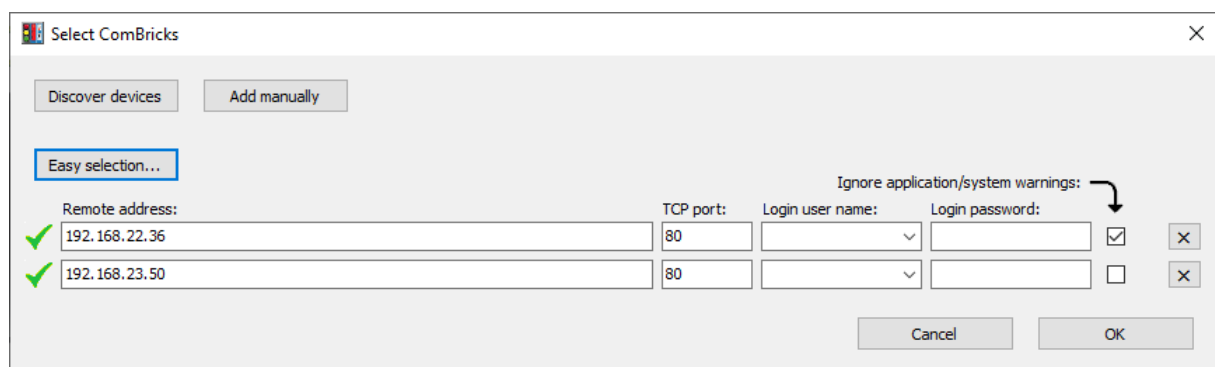


Fig. 3 - ComBricks selection dialog

You can add multiple ComBricks by clicking 'Add manually'; this adds another line where you can fill in the details of other ComBricks.

The 'Easy selection' button allows you to copy properties of a selected ComBricks to other Head Stations.

If you do not know the IP address of the ComBricks that you wish to add, click 'Discover devices'. This opens the Discovery Tool. For help on using this tool, refer to the manual of the Discovery Tool on <http://procentec.com/downloads/ComBricks/ComBricks-QuickStart-Discovery-Tool-EN.pdf>.

3.1.2 Edit a ComBricks Head Station

When a ComBricks Head Station entry must be edited, for example when the password or IP address has been changed, select the ComBricks in the list and click 'Edit'. Now you can make the required changes and click 'OK'.

3.1.3 Remove a ComBricks Head Station

To erase a ComBricks Head Station from the monitoring list, simply select that ComBricks in the list and click 'Remove...'. Click 'Yes' on the confirmation dialog.

It is also possible to delete the entire list of ComBricks. Go to 'File – Clear' in the menu bar, this will clear all ComBricks Head Stations.

3.2 The Traffic Light

The traffic-light style overview page indicates with easy colours how healthy the PROFIBUS system is.

This paragraph describes the rules for the traffic light; when the colour changes and if it can change back to green. It also explains the measurement details.



3.2.1 Measurement time and Clear button

As soon as the Network Condition Indicator executable has started, the 'Measurement time' starts. You will see the start time and the measurement time.

Right next to the traffic light are three counters. Listed from top to bottom they represent:

- Total measured time (absolute and percentage) of Red traffic light (Critical) state
- Total measured time (absolute and percentage) of Yellow traffic light (Warnings) state
- Total measured time (absolute and percentage) of Green traffic light (Normal) state

To reset these measurements or timers, go to the main menu and choose one of the following (see image below):

- 'Clear NCI related data (Trafficlight)' (only resets the measured data on the NCI, not on the Combricks)
- 'Clear NCI related data (Trafficlight + Time counters)' (only resets the measured data and the timers on the NCI, not on the Combricks)
- 'Clear all data (Trafficlight + Time counters)'. Resets all measurement data on the NCI and on all ComBricks, including the timers.

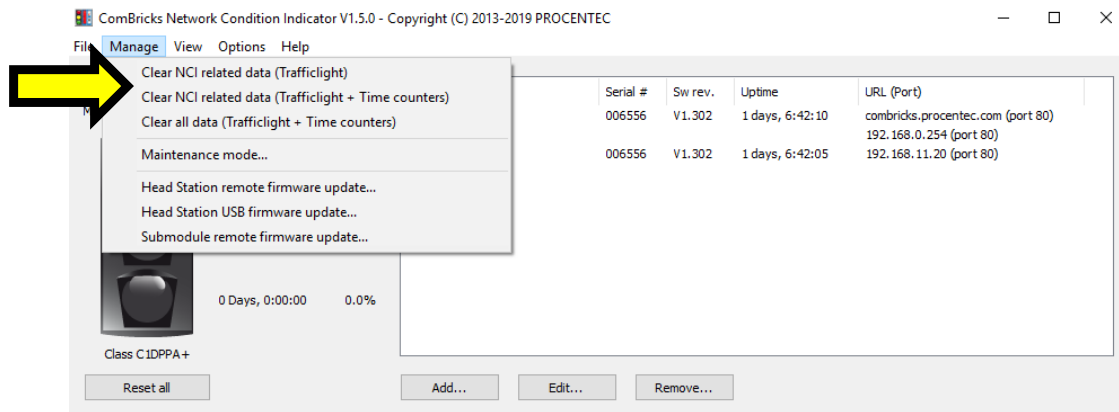
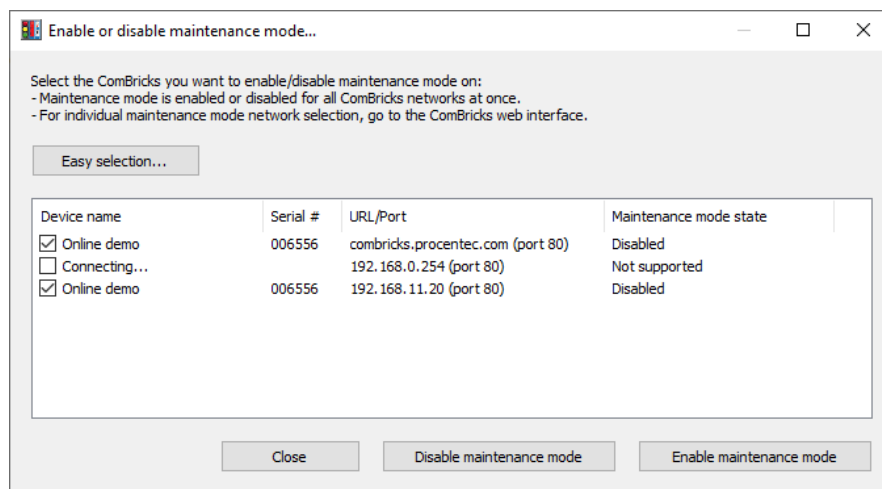


Fig. 4 - Reset measurements and/or timers

The 'Reset all'-button below the Traffic Light will reset all statistics and measured scope signals/Bar Graph info in ALL of the listed ComBricks. It will not reset the counters.

3.2.2 Maintenance mode

The NCI tool can be used to remotely put multiple selected ComBricks into Maintenance mode (Since firmware version 1.300). For a description on Maintenance mode, see ComBricks manual paragraph 'Maintenance mode' under 'Device management'. Select the ComBricks units that need to be put into Maintenance mode, and select 'Enable'.

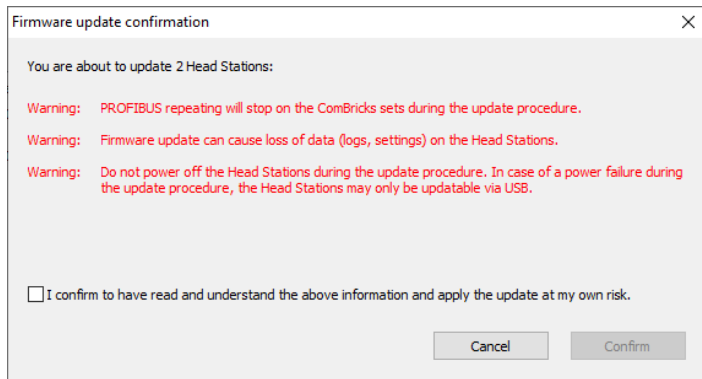


There is an 'Easy selection' box to help select large groups of ComBricks.

3.2.3 Remote updating of the Head Station

Since Firmware version 1.302 it is possible to remotely update the firmware of one or more Head Stations, using the NCI tool version 1.5.0.

In the menu, select 'Manage – Head Station remote Firmware update...' and select the firmware file that you want to send to the ComBricks. Next, you can select one or more ComBricks Head Stations. There is an 'Easy selection' box to help select large groups of ComBricks. The following warning appears, which needs to be confirmed. After checking the checkbox and clicking 'Confirm' the update procedure will start.



3.2.4 Local updating of the Head Station

NCI can be used to locally update a single Head Station with USB. Select 'Manage – Head Station USB Firmware update...', select the firmware file that you want to send to the ComBricks and follow the instructions on the screen.

3.2.5 Updating ComBricks modules

NCI can also be used to update modules remotely. Select the target ComBricks in the list, choose 'Manage – Submodule Remote Firmware update' and press 'Connect to Head Station'. The modules will load. Then double-click on the module that you wish to update, and select the correct firmware file. After pressing 'OK' the firmware will load directly.

3.2.6 Traffic light rules

Every ComBricks monitors one or more PROFIBUS networks. The traffic light will react according to the following rules:

	Traffic light state:	Back to green state:
Warnings/event based on telegrams:		
Critical diagnosis (Ext-diag)	●	Yes
Repeats	●	No
Syncs	●	No
Illegals	●	No
Device lost	●	No
Warnings/events based on physical measurements:		
DP Bargraph close to limit (25% of the set limit)	●	Yes
DP idle voltage close to limit (10% of the set limit)	●	Yes
PA Bargraph close to limit (10% of the set limit)	●	Yes
PA measurements close to limit (10% of the set limit)	●	Yes
DP Bargraph voltage below limit	●	No
DP idle voltage over/under limit	●	No
PA Bargraph over/under limit	●	No
PA measurements over/under limit	●	No

The last column 'Back to green state' indicates if the traffic light can go back to green during measurement after a problem is fixed. After certain events (e.g. repeats) the traffic light does not go back to green. You must acknowledge this event with the 'Reset' button below the traffic light.

3.2.7 ComBricks Head Station details

If the Network Condition Indicator has turned yellow or red, the corresponding Head Station in the list of connected ComBricks will also have the same colour. You can view the details of this ComBricks Head Station by double-clicking on it in the list, or by selecting it and then right-click on it, and choose 'Details'.

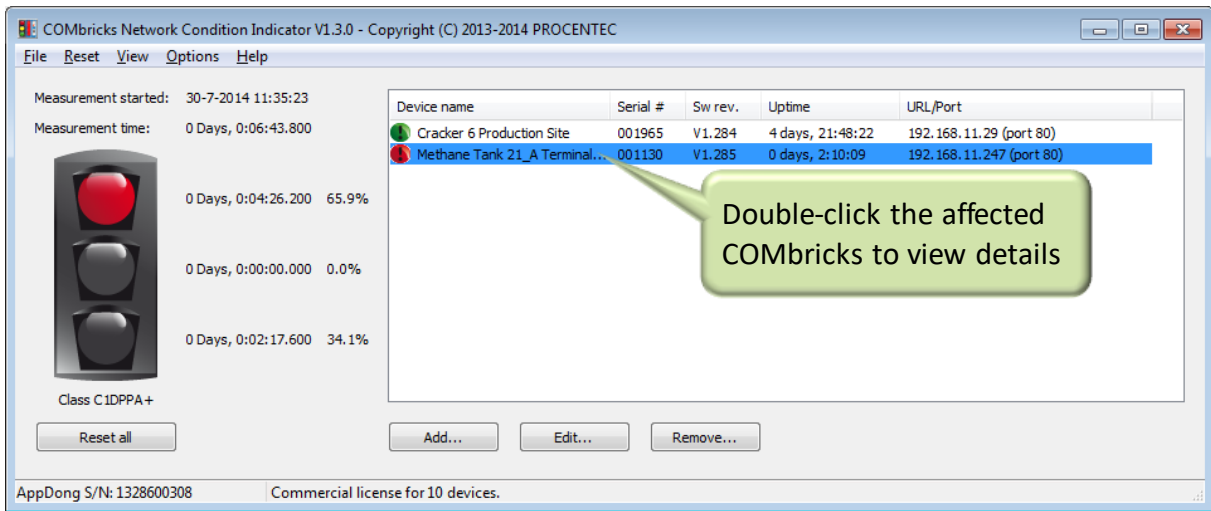


Fig. 5 - Double-click a ComBricks in the list to view details

In this overview all PROFIBUS warnings are displayed. From here you can choose to reset the Indicator for this specific ComBricks, or browse to the webpage of the corresponding ComBricks to investigate further.

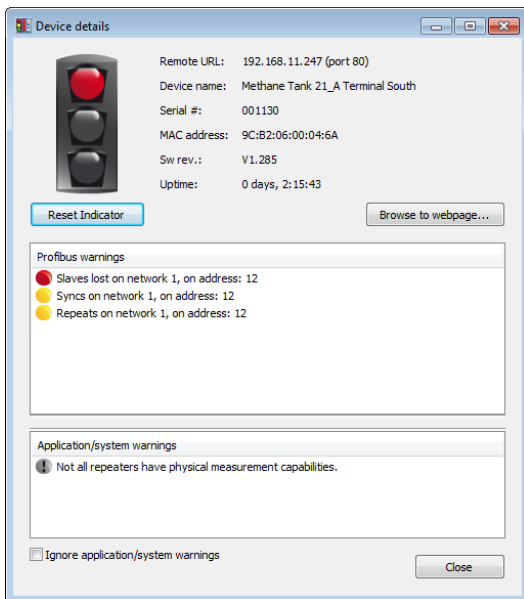
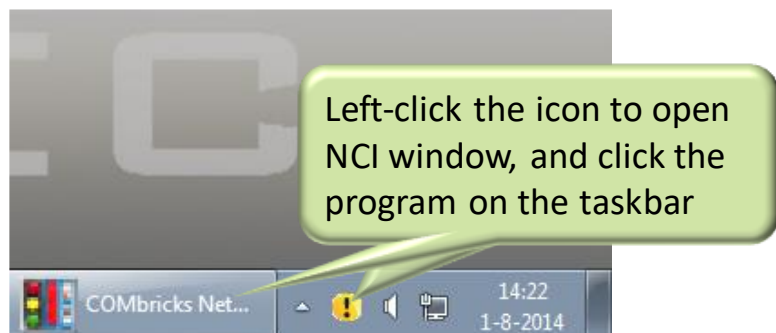


Fig. 6 - Details of ComBricks details with PROFIBUS warnings

3.2.8 System tray icon

When the Network Condition Indicator is running, a system tray icon appears with the same color as the current state of the Traffic Light. It allows easy access to the main window; simply left-click on it and click the program in the task bar to open the Network Condition Indicator.



3.2.9 System warnings: Exclamation mark

The traffic light indication can have an exclamation mark in the green, yellow or red colour. The reason for this is an application or system warning from the ComBricks.



In any of these cases you will see an exclamation mark in the traffic light:

- Unable to connect to the device ([number] attempts)
- Some transactions with the ComBricks failed: [number] since last connect.
- Not all repeaters have physical measurement capabilities.
- The license implies that not all available networks have ProfiTrace-OE capabilities. This means that you have a license for 1 network in the ComBricks Head Station (1B instead of 1C).

To disable the exclamation mark and the corresponding message, click 'Ignore application/system warnings' for each ComBricks Head Station.

3.3 Minimized view

If you want the Network Condition Indicator to take up less space on the Windows desktop, choose 'View – Minimized view'. This will reduce the window to only the traffic light, while the menu function 'Reset' is still available.

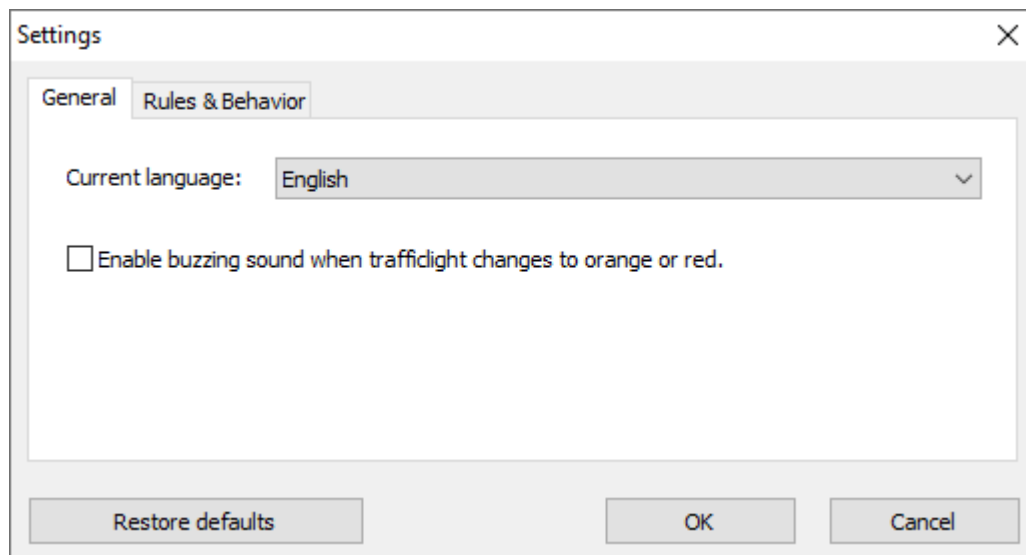
You may also choose to enable 'Always on top' so that the traffic light is always visible on the screen.

The system tray icon (described in paragraph 3.2.8) remains active in Minimized mode.



3.4 Settings

In the Options - Settings menu you can change the language. When new languages become available, you can download these from our website. Put the language file (format: lang.xxxxx.dat) in the same folder as the executable of the Network Condition Indicator and restart the program. Next, go to 'Options – Settings' in the menu bar, and choose your language. Click apply and restart again.



You can also enable or disable a buzzer that indicates an escalation of traffic light color (from green to orange or red, or from orange to red).

3.5 Changing rules & behavior

In the menu 'Options – Settings' there is a tab where you can select that you want to ignore Syncs. This is useful when there are disabled devices in the network.



4. Revision history

Version 1.0

- Minor changes

Version 1.0.1

- Minor changes
- Added explanation about the measurements next to Traffic Light.
- Removed Distributor list

Version 1.0.2

- Removed paragraphs about and references to license; no longer required since version 1.4.2.
- Minor textual changes

Version 1.2.0

- Added Maintenance mode, remote updating and module updating paragraphs.

Version 1.2.2

- Updated paragraph 3.1.1
- Updated paragraph 3.2.1
- Updated paragraph 3.4

5. Sales offices and distributors

HEADQUARTERS

PROCENTEC
Klopperman 16
2292 JD WATERINGEN
Netherlands

T: +31-(0)174-671800
F: +31-(0)174-671801
E: info@procentec.com
I: www.procentec.com

ARGENTINA

eFALCOM
Alcorta 2411
B1744 - Moreno
Buenos Aires
Argentina

T: +54 237 46 31 151
F: +54 237 46 31 150
E: santiago.falcomer@efalcom.com
I: www.efalcom.com.ar

AUSTRALIA

IS Systems Pty Limited
14 Laverick Ave.,
Tomago
NSW, Australia, 2322

T: +61 2 4964 8548
F: +61 2 4964 8877
E: fritz.woller@issystems.com.au
I: www.issystems.com.au

Emerson Automation Solutions
356 Chisholm Rd.
Auburn
NSW, Australia, 2144

T: +61 2 97952845
F: +61 2 4423 3232
E: dilraj.singh@emerson.com
I: www.emerson.com

BELGIUM and LUXEMBOURG

Bintz Technics N.V.
Brixtonlaan 23
B-1930 Zaventem
Belgium

T: +32 2 720 49 16
F: +32 2 720 37 50
E: bloemen@bintz.be
I: www.bintz.be

BRAZIL

Westcon Instrument. Indl Ltda
Rual Alvaro Rodrigues, 257
São Paulo – SP
Brazil - CEP 04582-000

T: +55 11 5561-7488
F: +55 11 5093-2592
E: paolo@wii.com.br
I: www.wii.com.br

CANADA

Streamline Process Management Inc.
#3, 4351 – 104 Ave SE
Calgary, Alberta T2C 5C6
Canada

T: +1 403 225 1986
F: +1 587 585 2828
E: admin@streamlinepm.com
I: www.streamlinepm.com

JCom Automation
1115 Whitefield Dr.
K9J 7P4, Ontario
Canada

T: 1 705 868 8745
I: www.jcomautomation.ca

CHILE

RP Ingenieria Limitada
Tucapel 92 oficina 52
Concepción
Chile

T: +56-(0)41-2469350
F: +56-(0)41-2522592
E: rodrigopinto@rpingeneria.cl
I: www.rpingeneria.cl

CHINA

PROCENTEC Beijing
Room E-1115 WangJingYuan YouLeHui
ChaoYang
Beijing
China

T: +86(10)84766911 or 84787311
F: +86(10)84766722
E: info@procentec.net
I: www.procentec.net

CZECH REPUBLIC

FOXON s.r.o.
Polní 367
460 01 Liberec 12
Czech Republic

T: +420 484 845 555
F: +420 484 845 556
E: foxon@foxon.cz
I: www.foxon.cz

DENMARK

ProSaiCon
T: +45 70 20 52 01

Jernbanegade 23B
DK 4000 Roskilde
Denmark

F: +45 70 20 52 02
E: hfj@prosaicon.dk
I: www.prosaicon.dk

EGYPT

MTSE
7, Amin Annis St., 4th Sec.
11341 Cairo
Egypt

T: +20 2 241 475 07
F: +20 2 229 031 60
E: hassan.mahdy@mtse.com.eg
I: www.mtse.com.eg

ESTONIA

Saksa Automaatika OU
Peterburi Tee 49
Tallinn
EE-11415 Estonia

T: +372 605 2526
F: +372 605 2524
E: info@saksa-automaatika.ee
I: www.saksa-automaatika.ee

FINLAND

Hantekno Oy
Kalliotie 2
04360 Tuusula
Finland

T: +358 40 8222 014
E: info@hantekno.com
I: www.hantekno.fi

FRANCE

AGILICOM
Bâtiment B
1, rue de la Briaudière
Z.A. La Châtaigneraie
37510 BALLAN-MIRE
France

T: +33 247 76 10 20
F: +33 247 37 95 54
E: jy.bois@agilicom.fr
I: www.agilicom.fr

GERMANY

PROCENTEC GmbH
Benzstrasse 15
D-76185 Karlsruhe
Germany

T: +49-(0)721 831 663-0
F: +49-(0)721 831 663-29
E: info@procentec.de
I: www.procentec.de

INDIA

UL Engineering Services & Software Pvt Ltd
Nirman Classic,
Katraj-Kondhwa Road,
Katraj, Pune-411046
India

T: +91-202 696 0050
F: +91-202 696 2079
E: dileep.miskin@ulepl.com
I: www.ulepl.com

Automation Combine
B.R House, 4th Floor
Hennur Main Road
Bangalore 560043, India

T: +98 452 84550
F: +93 421 37534
W: www.automationcombine.in

IRELAND

PROFIBUS Ireland
Automation Research Centre
University of Limerick
National Technology Park, Plassey
Limerick
Ireland

T: +353-61-202107 or +35361240240
F: +353-61-202582
E: info@profibus.ie
I: www.profibus.ie

ISRAEL

Instrumentics Industrial Control
8 Hamlacha St.
New Industrial Zone
Netanya, 42170
Israel

T: +972-9-8357090
F: +972-9-8350619
E: info@instrumentics-ic.co.il
I: www.inst-ic.co.il

ITALY

PROCENTEC Italy
Via Branze n. 43/45
25123 Brescia
Italy

T: +39 030 200 8610
F: +39 030 238 0059
E: www.procentec.it
W: www.procentec.it

JAPAN

TJ Group
C/O Japanese PROFIBUS Organisation
West World Building 4F
3-1-6 Higashi-Gotanda,
Shinagawa-ku,
Tokyo, 141-0022
Japan

T: +81-3-6450-3739
F: +81-3-6450-3739
E: info@profibus.jp

KOREA

Hi-PRO Tech. Co., Ltd.
#2802, U-Tower, 1029
Youngduk-dong, Giheung-gu
Yongin-Si, Kyunggi-do,
446-908 Korea

T: +82 82-31-216-2640
F: +82 82-31-216-2644
E: chays@hiprotech.co.kr
I: www.profibus.co.kr

LEBANON

Industrial Technologies S.A.L. (ITEC)
Point Center, Boulevard Fouad Chehab
Sin El Fil
Beirut
Lebanon

T: +961 1 491161
F: +961 1 491162
E: sales@iteclb.com
I: www.iteclb.com

MEXICO

F&G GLOBAL Equipment
Rómulo Garza 205
Col. Industrias del Vidrio
San Nicolas de los Garza, NL

T: +81 1933 7754
E: ventas@FGequipment.com
W: www.fgequipment.com

NETHERLANDS

PROCENTEC B.V.
Klopperman 16
2292 JD Wateringen
Netherlands

T: +31 (0)174 671800
F: +31 (0)174 671 801
E: info@procentec.com
I: www.procentec.com

NEW ZEALAND

Mantis Systems
34 Glasgow St.
Dunedin
New Zealand

T: +643 455 6072
F: +31 (0)174 671 801
E: tbaldock@mantis-sys.co.nz
I: www.mantis-sys.co.nz

NORWAY

Nortelco Automation AS
Johan Scharffenbergs vei 95
N-0694 Oslo
Norway

T: +47 22 57 61 00
E: post@nortelcoautomation.no
I: www.nortelcoautomation.no

PAKISTAN

OTC
Suite No. 4, 1st Floor Liberty Heights
Main Boulevard Gulberg
Lahore - 54660
Pakistan

T: +92 42 3587 2667-9 Ext. 117
F: +92 42 3587 2670
E: nsm@otc.com.pk
I: www.otc.com.pk

PERU

ControlWare
Jr. Los Silicios 5409
Los Olivos - L39
Peru

T: +51 1637 3735
F: +51 1528 0454
E: info@controlware.com.pe
I: www.controlware.com.pe

POLAND

INTEX Sp. z o.o.
ul. Portowa 4
44-102 Gliwice
Poland

T: +48 32 230 75 16
F: +48 32 230 75 17
E: intex@intex.com.pl
I: www.intex.com.pl

PORTUGAL

IndustrialSys
Rua Alexandre Herculano
Nº25,3530-144 Mangualde
Portugal

T: +351 96 716 1605
I: www.iindustrialsys.pt
E: joao.costa@industrialsys.pt

ROMANIA

S.C. SVT Electronics S.R.L.
Brăila 7
540331 Tg-Mure
Romania

T: +40 365 809 305
F: +40 365 809 305
E: sajgo.tibor@svt.ro
I: www.svt.ro

RUSSIA

Diagnostics and Monitoring
St. Lutova 4 – 60
398036, Lipetsk
Russia

T: +7 910 251 66 74
E: rubanova.oi@gmail.com

SAUDI ARABIA

ASM Process Automation
Al-Zahra Dist. – Attas st.
cross section with helmy Kutby St.
Villa no.25
Jeddah-21553
Saudi Arabia

T: +966 2 691 2741
F: +966 2 682 8943
E: info@asmeestablishment.com
I: www.asmeestablishment.com

SERBIA

MR Process Equipment
Tribalska 15
11050 Zvezdara
Serbia

T: +381 60 5140 513
E: mr@mrprocessequipment.com
I: www.mrprocessequipment.com

SINGAPORE / SOUTH EAST ASIA

Allegro Electronics
236 Serangoon Avenue 3 07-98
Singapore 550236

T: +65 628 780 63
E: sales@allegro.com.sg
I: www.allegro.com.sg

Gissmatic Automatisierung Pte Ltd (Malaysia)
318 Tanglin Road 01-34
Singapore 247979

T: +65 900 912 76
E: sales@gissmatic.com
I: www.gissmatic.com

SLOVAKIA

FOXON s.r.o.
Polní 367
460 01 Liberec 12
Czech Republic

T: +420 484 845 555
F: +420 484 845 556
E: foxon@foxon.cz
I: www.foxon.cz

SOUTH AFRICA

IDX
1 Weaver Street
Fourways
Johannesburg
South Africa - 2191

T: +27(11) 548 9960
F: +27(11) 465-8890
E: sales@idxonline.com
I: www.idxonline.com

SPAIN

LOGITEK, S.A
Ctra. de Sant Cugat, 63 Esc. B Planta 1ª
Rubí (BARCELONA), 08191
Spain

T: +34 93 588 6767
E: xavier.cardena@logitek.es
I: www.logitek.es

SWEDEN

Nortelco Automation AS
Johan Scharffenbergs vei 95
N-0694 Oslo
Norway

T: +47 22 57 61 00
E: post@nortelcoautomation.no
I: www.nortelcoautomation.no

SWITZERLAND

EME AG
Lohwisstrasse 50
CH-8123 Ebmatingen
Switzerland

T: +41 44 982 11 11
E: mhauri@eme.ch
I: www.eme.ch

TAIWAN

Orion Energy Technology
3F, No. 2, Aly. 6, Ln. 109, Sec. 2, Huanshan Rd.
Neihu District, Tapei City
114, Taiwan

T: +886 9 370 270 96
E: jackychiu76@gmail.com

TURKEY

Emikon Otomasyon
DES Sanayi sitesi 103 sokak
B-7 blok No:16 Yukari Dudullu / Umraniye
Istanbul 34776
Turkey

T: +90 216 420 8347
F: +90 216 420 8348
E: tolgaturunz@emikonotomasyon.com
I: www.emikonotomasyon.com

UNITED ARAB EMIRATES

Synergy Controls
907, IT Plaza Silicon Oasis :
Dubail
United Arab Emirates

T: +971 4 3262692
F: +971 4 3262693
E: sales@synergycontrols.ae

UNITED KINGDOM and N. Ireland

PROCENTEC UK
Digital World Center
1 Lowry Plaza, Suite 620
The Quays, Salford
M50 3UB Manchester
United Kingdom

T: +44-(0)753 430 7696
E: info@procentec.com
I: www.procentec.co.uk

iTech
Unit 1
Dukes Road
Troon
Ayrshire KA10 6QR
United Kingdom

T: +44 (0)1292 311 613
F: +44 (0)1292 311 578
E: sales@itech-troon.co.uk
I: www.itech-troon.co.uk

Parkelect Ltd.
84 Dargan Road
Belfast
BT3 9JU
N. Ireland

T: +44 2890 777743
F: +44 2890 777794
E: igillan@parkelect.co.uk
I: www.parkelect.co.uk

UNITED STATES

Grid Connect Inc.
1630 W. Diehl Road
Naperville, Illinois 60563
USA

T: +1 630 245-1445
F: +1 630 245-1717
E: sales@gridconnect.com
I: www.gridconnect.com/procentec.html

VIETNAM

Bavitech Corporation
42 Truong Son Street
Ward 2, Tan Binh District
Ho Chi Minh City
Vietnam

T: +84-8-3547 0976
F: +84-8-3547 0977
E: hai.hoang@bavitech.com
I: www.bavitech.com

For the up to date list of the Sales Offices and Distributors see www.procentec.com/company/distributors/. If your country or region is not listed, please contact us. We are still searching for distributors who can cover complete areas or countries.



6. About PROCENTEC

PROCENTEC are an independent Dutch company that supply products, training and consultancy to the Industrial Automation Market. Of primary focus is the development and manufacturing of automation products for PROFIBUS, PROFINET and Industrial Ethernet.

Some of our products are the most recognized solutions on the Market today. **ProfiTrace**, our mobile troubleshooting and maintenance tool has established itself as one of the most pioneering, yet essential tools available to engineers. In contrast our robust **ProfiHub** has, over the last decade, established itself as the go-to solution for ensuring a reliable network infrastructure. The combination of these products within our **ComBricks** solution has seen PROCENTEC become the primary manufacturer of network components with the integrated capability for remote monitoring and remote asset-management.

Our training facility, the **PROCENTEC Academy**, has certified over 4000 engineers to implement and maintain their PROFIBUS and PROFINET networks to the highest standards available.

The PROCENTEC **Competence Centre** has established itself as the leading consultancy on PROFIBUS and PROFINET projects worldwide, advising on architecture, engineering, training and commissioning. Once a network is commissioned, we have experts available 24/7 to answer questions with maintenance or help troubleshooting a problem.

Products

- Atlas and Mercury
- EtherTAP and EtherMIRROR
- ProfiHub
- ProfiTrace
- ComBricks
- VPGate
- PROFINET tools
- Cables & Connectors

Services

- On-site & Online Support
- Network Audit
- Network Certification
- Consultancy
- Testlab & Democenter
- Competence Center

Training

- PROFIBUS training courses
- PROFINET training courses
- Product training courses



PROCENTEC BV
Klopperman 16
2292 JD Wateringen
The Netherlands

T: +31 (0)174 671 800

F: +31 (0)174 671 801

E: support@procentec.com

W: www.procentec.com

