

# PROFILOGGER

Monitor your PROFIBUS data

ProfiLogger is a 8 channels data logger; you can record and analyse input and output data of your devices without interfering with your PROFIBUS installation.

ProfiLogger relies on ProfiTrace Analyser to obtain data from a PROFIBUS network.

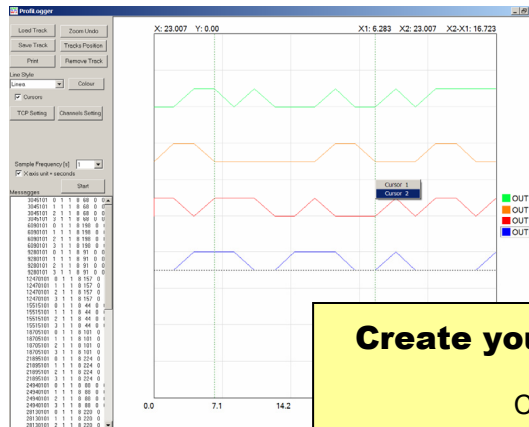
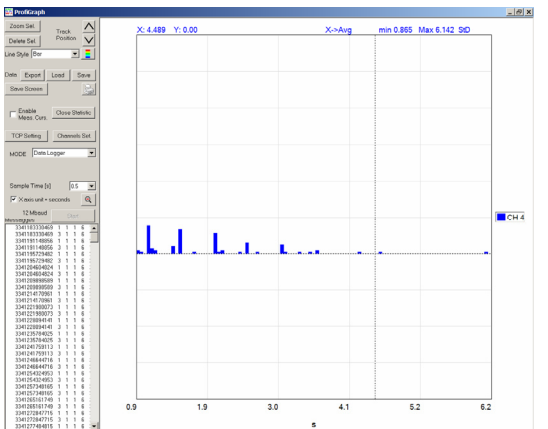
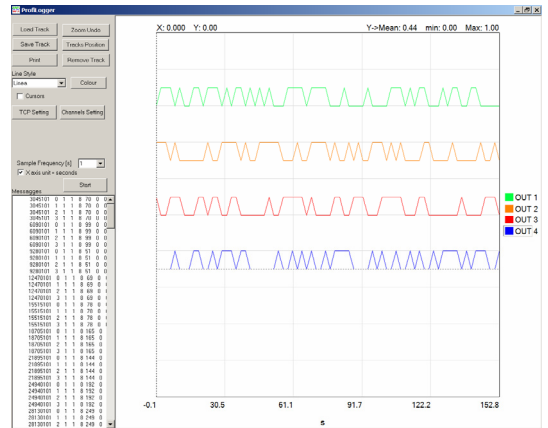
ProfiLogger enables long time recording of slow process value thank to a programmable sample frequency form 0.1s up to 60s. ProfiLogger can acquire up to 60000 telegrams/channel.

ProfiLogger instantly displays recorded data in a graphical way, allowing analysis of PROFIBUS data exchange over a long period. An easy and convenient "Cursor measure function" is provided to help operator.

ProfiLogger can be run locally or remotely through a network, since it uses an efficient TCP connection with the computer running ProfiTrace.

ProfiLogger gives useful statistical information: it can display time distribution, mean, standard deviation, minimum and maximum values of any cyclical digital signals.

ProfiLogger saves the graphical screen in bitmap format (.bmp) and exports data into compatible text files (.csv).



**Create your own test environment!**  
Contact us  
CSMT Gestione s.c.a.r.l.  
r.miglietti@csmt.it