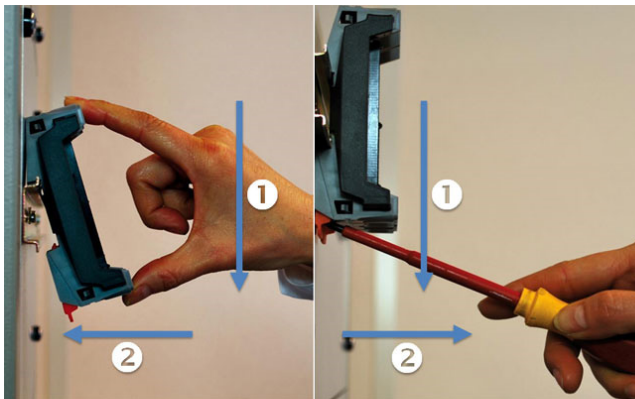


Technical Data - Head Station 1A/1B/1C

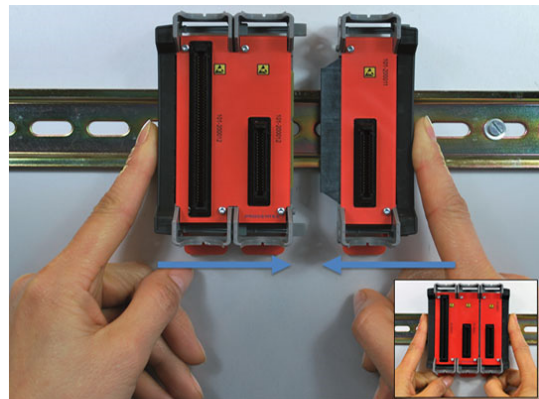
Technical Data - Head Station 1A/1B/1C	
Type differences (Hardware is identical with all types)	
Head Station 1A	No ProfiTrace OE
Head Station 1B	ProfiTrace OE for 1 PROFIBUS network + ProfiTrace 2 live streaming + OPC (since June 2013)
Head Station 1C	ProfiTrace OE for 4 PROFIBUS networks + ProfiTrace 2 live streaming + OPC
For all Head Stations	CommDTM
Power supply specifications	
Nominal supply voltage Current consumption Power Reverse polarity protection Redundant power supply Wire diameter	12 .. 24 VDC 800 mA (fully loaded) 20 W Yes Yes < 2.5 mm ² <u>Installation notes:</u> The device shall be supplied from an isolating transformer having a secondary Listed fuse rated either: <ul style="list-style-type: none"> • Maximum 5 amps for voltages 12~20 V, or • Maximum 4 amps for voltages 21~24 V, or is supplied by a Class 2 power supply, or equivalent.
Ethernet	
Connector Cable length Link speed MAC address Supported protocols Default IP address after reset/purchase Connections	RJ 45 Max. 100 m 10 / 100 Mbps 9C.B2.06.xx.xx.xx (label on the side of the Head Station) HTTP, FTP, SMTP, TELNET, DHCP, SNMP 192.168.1.254 20 simultaneous web server clients
Relay contact	
Resistance Voltage Current	300 mOhm (plug included) 24 VDC 0.4 A <u>Installation notes:</u> The Relay output shall be supplied from an isolating transformer having a secondary Listed fuse rated either: <ul style="list-style-type: none"> • Maximum 5 amps for voltages 12~20 V, or • Maximum 4 amps for voltages 21~24 V, or is supplied by a Class 2 power supply, or equivalent.

Technical Data - Head Station 1A/1B/1C

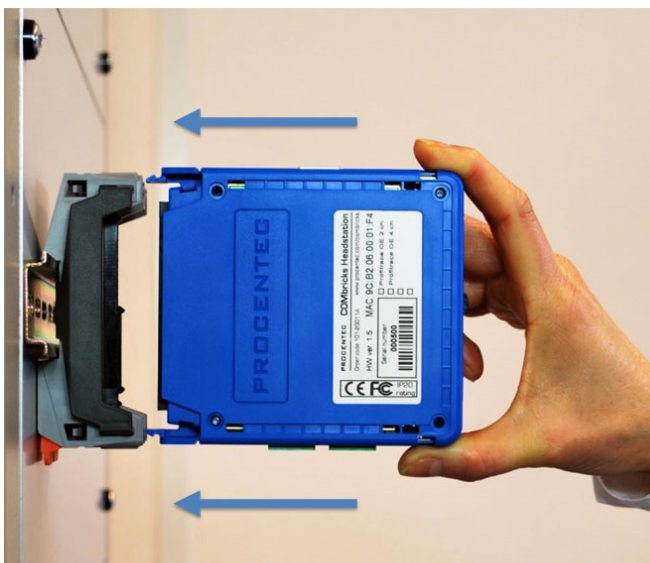
Backplane	
Modules Current available for the backplane PROFIBUS networks Compatible backplane units	32 (10 repeater modules positioned in the first 10 slots) 2.5 A 4 101-200012, 101-200023, 101-200024, 101-200027
SD Card	
Types Size	SD and SDHC Max. 32 GB (2 GB is provided)
Others	
Weight MTBF Ambient operating temperature rating	150 g To be defined 0°C to +60°C
PROCENEC Klopperman 16 2292 JD WATERINGEN (NL)	Tel.: +31-174-671800 Fax: +31-174-671801 Email: info@procentec.com



Mounting and un-mounting backplanes



Adding additional backplanes



Inserting modules



Powering the Head Station